

Endoca Certificate of Analysis:

Endoca BV
 Siriusdreef 17 2132 WT Hoofddorp EU
 Phone: +31-238-080-104
 info@endoca.com
 www.endoca.com
 ISO 22000 certified
 HACCP certified; GMP certified

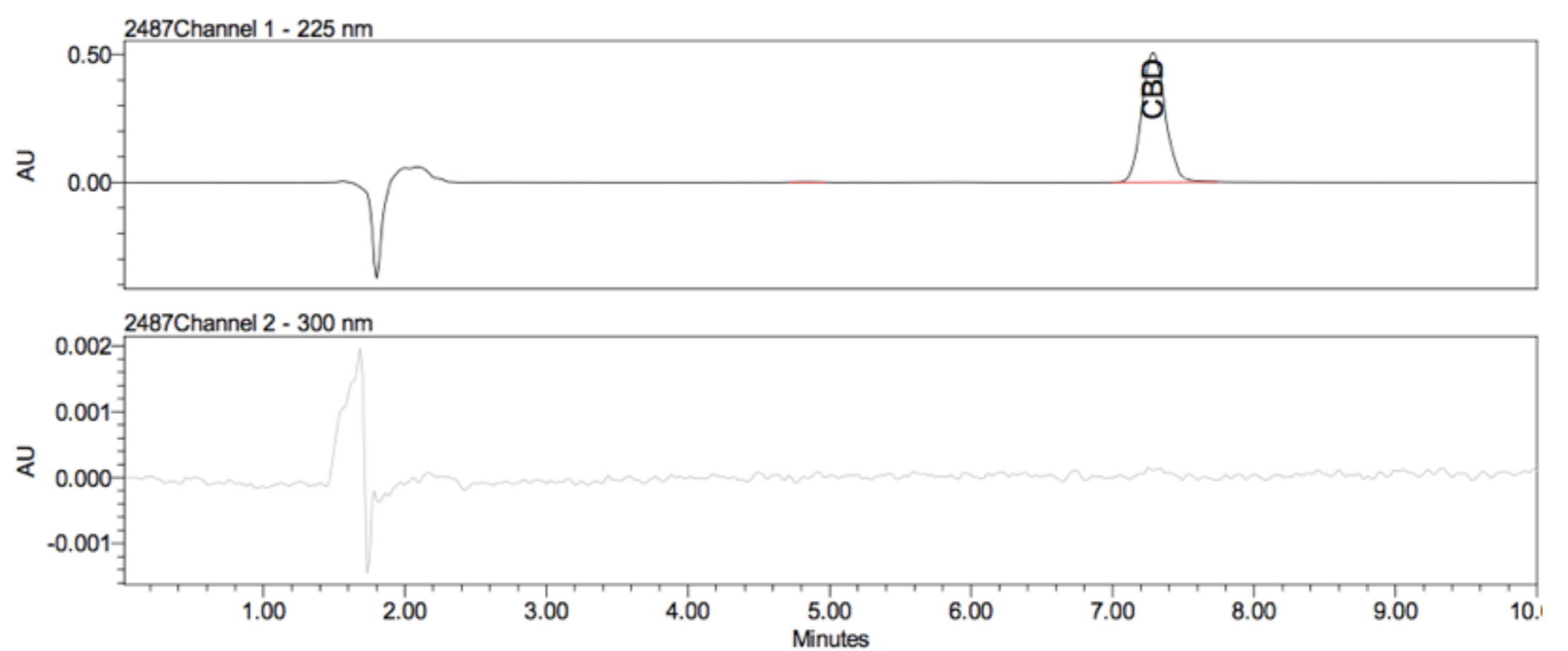
Responsible Supervisor:	Martin V.
Sample	Batch# 1412
Date samples received:	12-August 2019
Date analysis began:	12-August 2019
Date sample report produced:	22-August 2019
Expiry date :	August 2021
Sample Mass	1 g

Total CBD 99.11% Cannabinoid Profile:

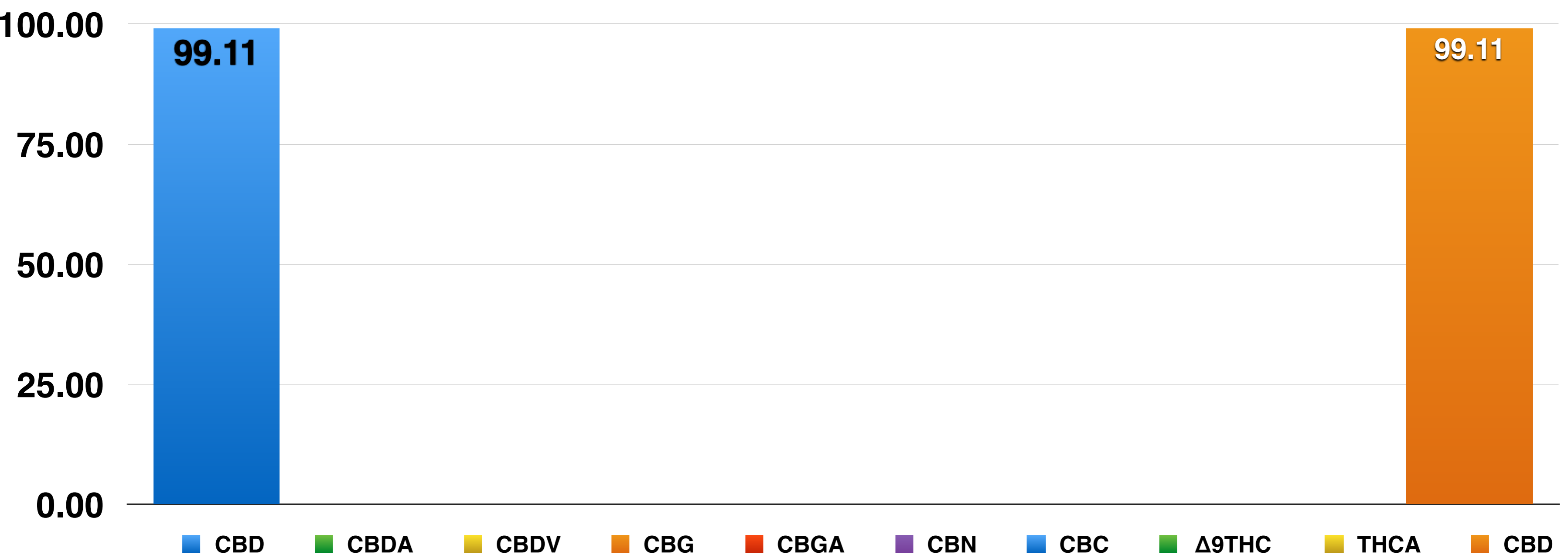
Component	Mass (%)	Amount (mg/g)
CBD	99.11	991.10
CBDA	<LOQ	<LOQ
CBDV	<LOQ	<LOQ
CBG	<LOQ	<LOQ
CBGA	<LOQ	<LOQ
CBN	<LOQ	<LOQ
CBC	<LOQ	<LOQ
Δ9THC	<LOQ	<LOQ
THCA	<LOQ	<LOQ
CBD	99.11	991.10

LOQ - Limit of Quantitation

HPLC-UV Analysis Method



Cannabinoids as Percent of Total Mass



Endoca Certificate of Analysis:

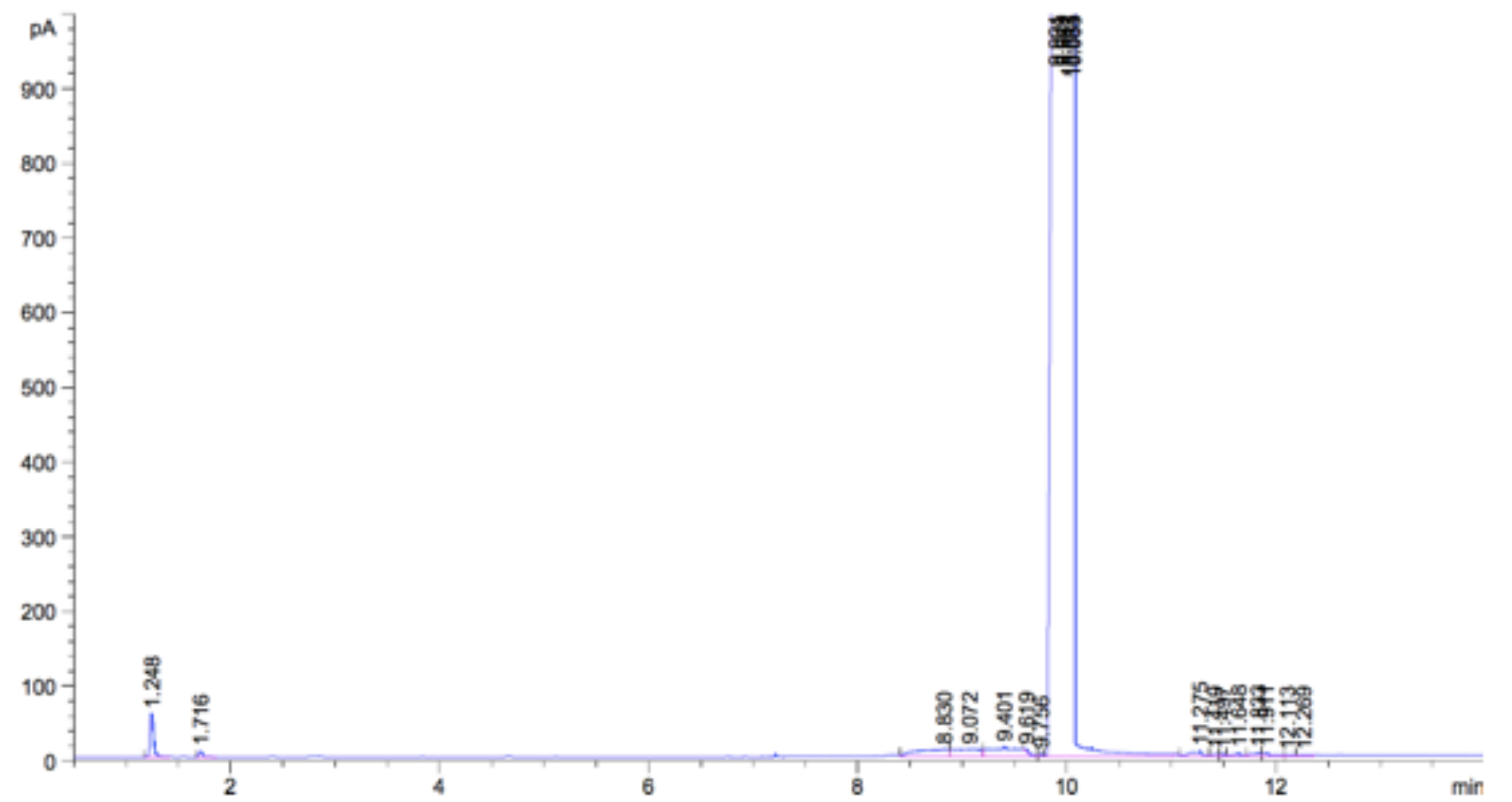
Endoca BV
 Siriusdreef 17 2132 WT Hoofddorp EU
 Phone: +31-238-080-104
 info@endoca.com
 www.endoca.com
 ISO 22000 certified
 HACCP certified; GMP certified

Responsible Supervisor:	<u>Martin V.</u>
Sample	<u>Batch# 1412</u>
Date samples received:	<u>12-August 2019</u>
Date analysis began:	<u>12-August 2019</u>
Date sample report produced:	<u>22-August 2019</u>
Expiry date :	<u>August 2021</u>
Sample Mass	<u>1 g</u>

Residual Solvents Profile:

Component	Amount ppm
Methanol	<10
Ethanol	<10
Hexane	<10
Ethylacetate	<10
Isopropanol	<10
Acetone	<10
Acetonitrile	<10
Toluene	<10
Dichlormethane	<10
Chloroform	<10
Ethylbenzene	<10
Xylene	<10

HS-GC-FID Analysis Method



Terpenoid Distribution

- β -Caryophyllene
- α -Humulene
- Caryophyllene oxide
- Myrcene
- α -Pinene
- Terpinolene
- Humulene epoxide II
- Limonene
- β -Pinene
- E- β -Ocimene
- Sabinene
- Linalool

4

3

2

1

0

Endoca Certificate of Analysis:

Endoca BV
 Siriusdreef 17 2132 WT Hoofddorp EU
 Phone: +31-238-080-104
 info@endoca.com
 www.endoca.com
 ISO 22000 certified
 HACCP certified; GMP certified

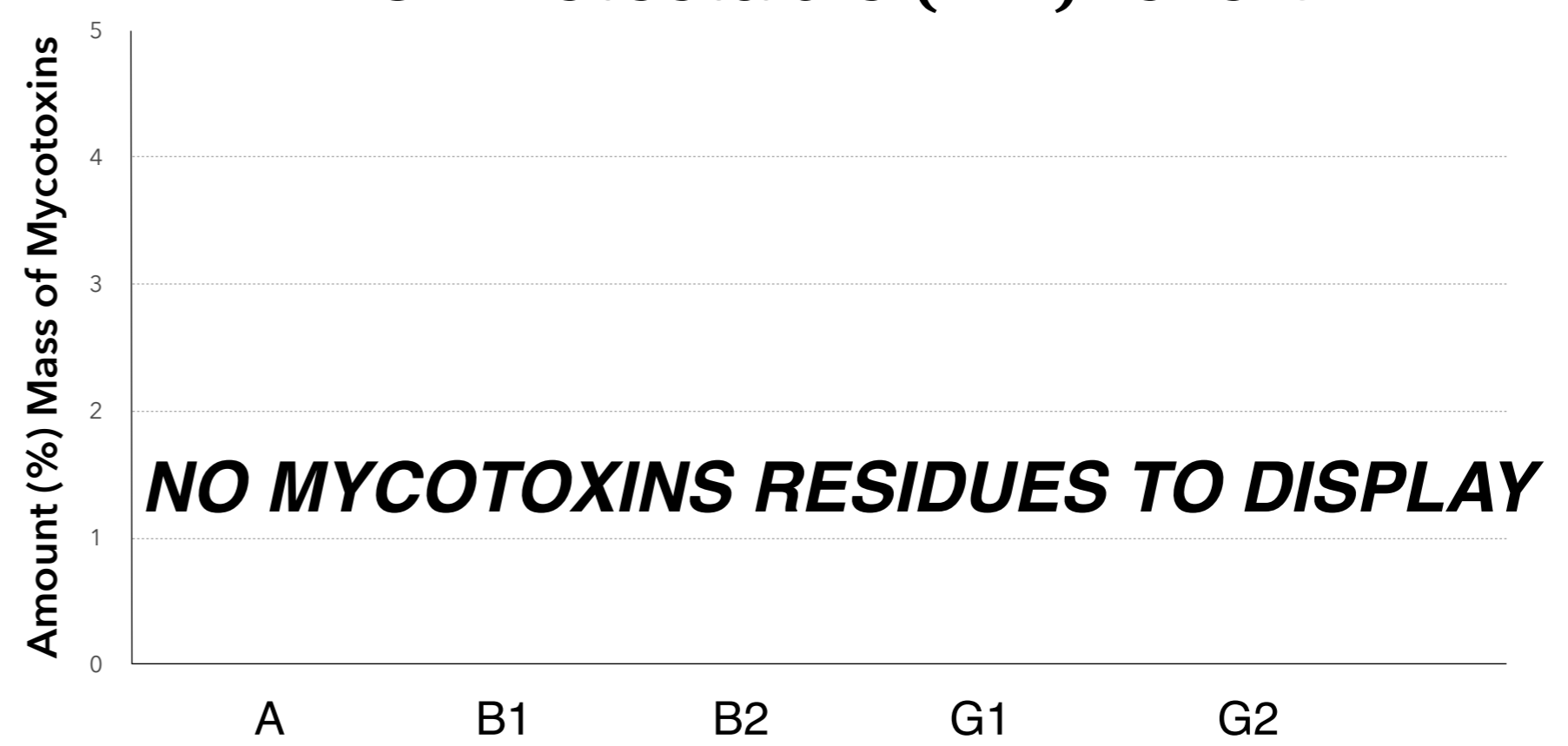
Responsible Supervisor:	Martin V.
Sample	Batch# 1412
Date samples received:	12-August 2019
Date analysis began:	12-August 2019
Date sample report produced:	22-August 2019
Expiry date :	August 2021
Sample Mass	1 g

Microbial Profile:

Component	Results
<i>Listeria m.</i>	1 g ND*
<i>Escherichia c.</i>	1 g ND*
<i>Salmonella</i>	25 g ND*
Yeast	1 g ND*
Mould	1 g ND*

*ND - Not detected

All Mycotoxins at Non Detectable (ND) levels



Nutrition Facts

Component	%
Moisture and volatile matter content	ND*
Protein content	ND*
Total fat content	ND*
Carbohydrates content	ND*
Total Fiber content	ND*
Total sugars content	ND*
Total ash content	ND*

*ND - Not detected

Endoca Certificate of Analysis:

Endoca BV
 Siriusdreef 17 2132 WT Hoofddorp EU
 Phone: +31-238-080-104
 info@endoca.com
 www.endoca.com
 ISO 22000 certified
 HACCP certified; GMP certified

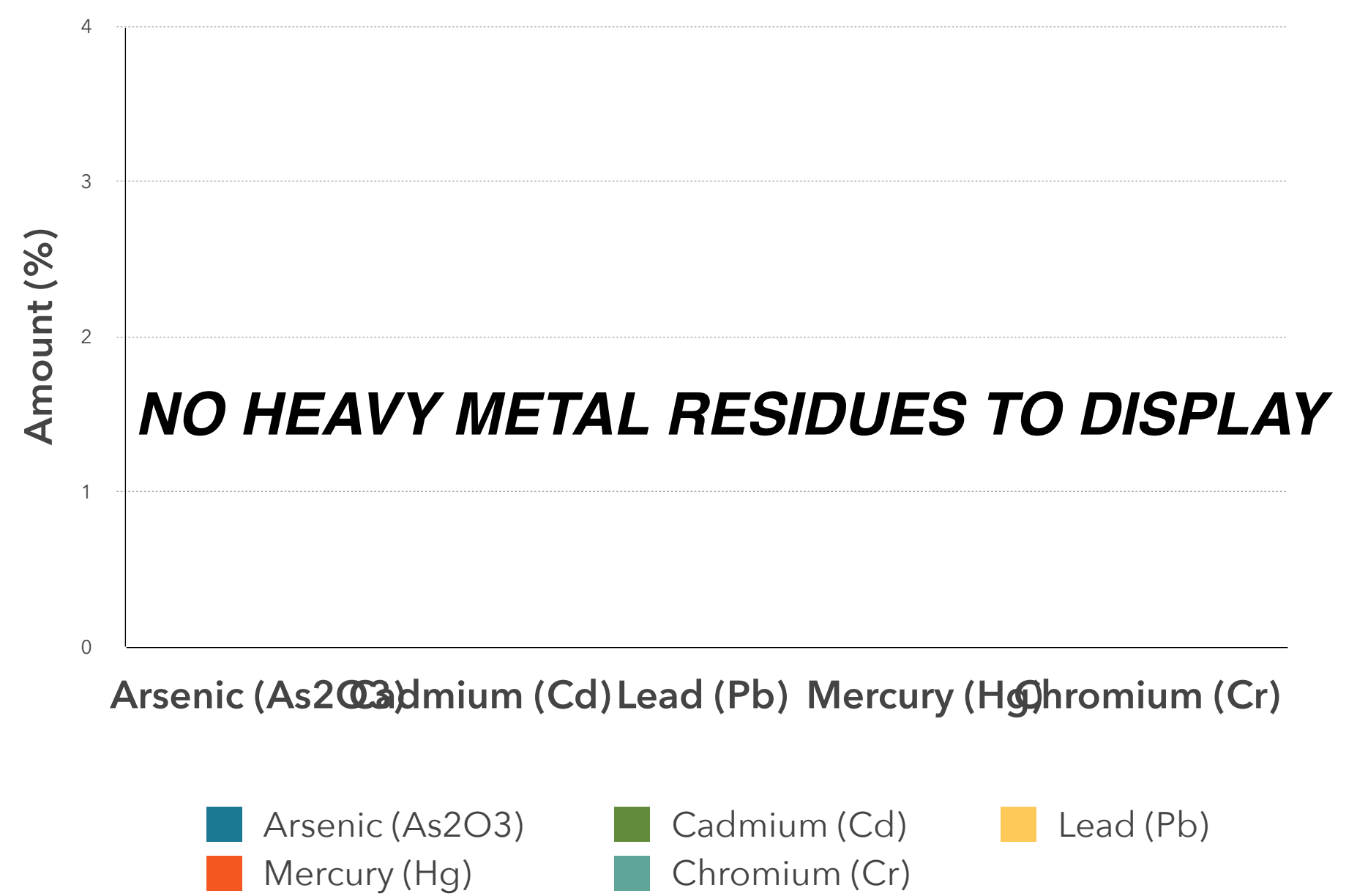
Responsible Supervisor: Martin V.
 Sample: Batch# 1412
 Date samples received: 12-August 2019
 Date analysis began: 12-August 2019
 Date sample report produced: 22-August 2019
 Expiry date: August 2021
 Sample Mass: 1 g

Heavy Metals Profile:

Component	Mass (%)	Amount (ppm)	Limit** (ppm)
Arsenic (As ₂ O ₃)	ND*	< 0.1	< 0.1
Cadmium (Cd)	ND*	< 0.1	< 0.1
Lead (Pb)	ND*	< 0.1	< 0.1
Mercury (Hg)	ND*	< 0.1	< 0.1
Chromium (Cr)	ND*	< 1	< 1
Tin (Sn)	ND*	< 10	< 10

*ND - Not detected, **Codex STAN 193-1995, GB 2762, EC No. 1881/2006, FDA

All Heavy Metals at Non Detectable (ND) levels



Conclusions:

No heavy metal residues detected.

No flammable residues detected.

No chemical residues detected.