

## Moon Mother Hemp Company

2425 Canyon Boulevard  
Boulder, CO 80302  
jessica@moonmotherhemp.com  
(303) 442-2983  
Lic. #

## Sample: 06TRC003919.O2386

Strain: Crude Oil  
Sample Received: 06/13/2019; Report Created: 06/14/2019  
Leaf Inventory/Lot ID: ; Leaf Pre-Transfer Inventory/Lot ID:  
Leaf Batch ID: ; Leaf Pre-Transfer Batch ID:  
Leaf Manifest ID:

## Crude Oil 052219

Other, Industrial Hemp  
External Batch ID:



**25.00**  
**mg/g**

THC Potency

**610.84**  
**mg/g**

CBD Potency

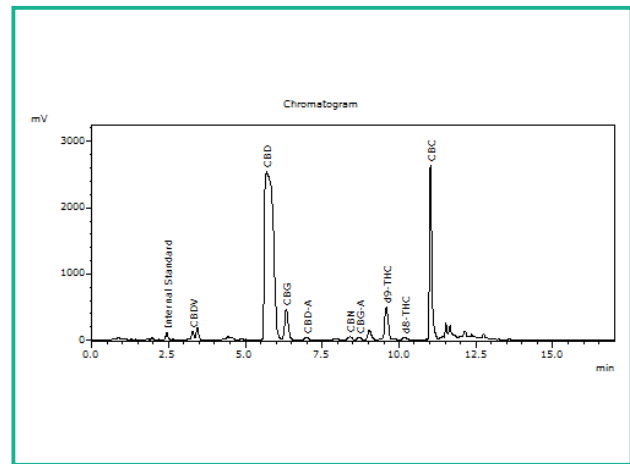
**635.84**  
**mg/g**

Total Potency\*

## Cannabinoids

Analyte	Mass mg/g	Mass %
THCa	ND	ND
Δ9-THC	25.00	2.500
CBD	610.00	61.000
CBDa	0.96	0.096
CBN	1.00	0.100
Δ8-THC	2.20	0.220
THCV	ND	ND
CBDV	3.70	0.370
CBG	22.00	2.200
CBGa	0.88	0.088
CBC	47.00	4.700
<b>Total</b>	<b>712.74</b>	<b>71.274</b>

## Chromatogram



THC Potency = THCa \* 0.877 + d9-THC; CBD Potency = CBDa \* 0.877 + CBD; LOQ = Limit of Quantitation; Total Potency\* = Total THC + Total CBD. Unless otherwise stated all quality control samples performed within specifications established by the Laboratory.

908 N. Howard St., Suite 101  
Spokane, WA  
(509) 284-7522  
<http://traceanalytics.com/>  
Lic# 0014

*Gwen Bode*  
Gwen Bode  
Scientist I

Confident Cannabis  
All Rights Reserved  
support@confidentcannabis.com  
(866) 506-5866  
[www.confidentcannabis.com](http://www.confidentcannabis.com)



This product has been tested by Trace Analytics, Inc using valid testing methodologies and a quality system as required by state law. Values reported relate only to the product tested. Trace Analytics, Inc makes no claims as to the efficacy, safety or other risks associated with any detected or non-detected levels of any compounds reported herein. This Certificate shall not be reproduced except in full, without the written approval of Trace Analytics, Inc. Lic# 0014 - Foreign Matter (Visual Inspection) - Moisture (Moisture Analyzer) - Water Activity (Water Activity Meter) - Microbiological (3M Petrifilm/qPCR) - Potency (HPLC-UV) - Residual Solvents (GCMS) - Mycotoxins (ELISA)

## Moon Mother Hemp Company

2425 Canyon Boulevard  
Boulder, CO 80302  
jessica@moonmotherhemp.com  
(303) 442-2983  
Lic. #

Sample: 06TRC003919.O2386

Strain: Crude Oil

Sample Received: 06/13/2019; Report Created: 06/14/2019

Leaf Inventory/Lot ID: ; Leaf Pre-Transfer Inventory/Lot ID:

Leaf Batch ID: ; Leaf Pre-Transfer Batch ID:

Leaf Manifest ID:

## Crude Oil 052219

Other, Industrial Hemp  
External Batch ID:



## Residual Solvents

Pass

Analyte	LOQ	Limit	Mass	Status
	PPM	PPM	PPM	
Acetone	1500.0	5000.0	ND	Pass
Benzene	0.6	2.0	ND	Pass
Butanes	1500.0	5000.0	ND	Pass
Chloroform	0.6	2.0	ND	Pass
Cyclohexane	1164.0	3880.0	ND	Pass
Dichloromethane	180.0	600.0	ND	Pass
Ethyl-Acetate	1500.0	5000.0	ND	Pass
Heptanes	1500.0	5000.0	ND	Pass
Hexanes	87.0	290.0	ND	Pass
Isopropanol	1500.0	5000.0	ND	Pass
Methanol	900.0	3000.0	ND	Pass
Pentane	1500.0	5000.0	ND	Pass
Propane	1500.0	5000.0	ND	Pass
Toluene	267.0	890.0	ND	Pass
Xylenes	1953.0	2170.0	ND	Pass

LOQ = Limit of Quantitation; The reported result is based on a sample weight with the applicable moisture content for that sample; Unless otherwise stated all quality control samples performed within specifications established by the Laboratory.

Sara Minier  
Senior Scientist

