



## MHE Manufacturing

mark@cannatrading.co  
424-644-4120

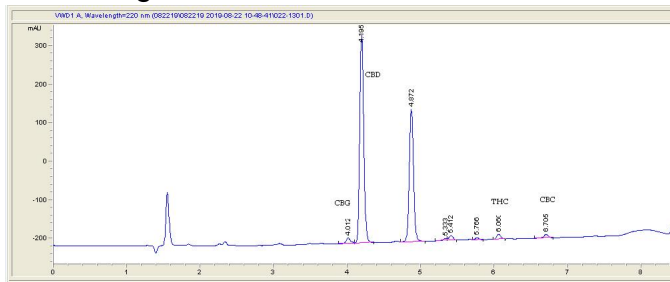
## Sample 152-082219-007

Pet Anti-Separation tincture (300mg)  
Sample Submitted: 08-22-2019; Report Date: 08-22-2019  
Sample Density: 940 mg/ml; Sample Unit Size: 28.50 g

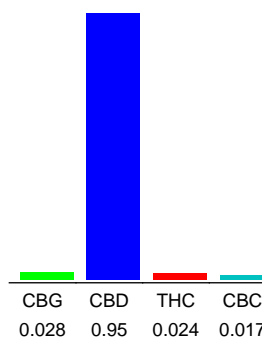
## Pet Anti-Separation tincture (300mg)

Tincture

### Chromatogram



### Cannabinoid Profile



### Cannabinoid Profile by HPLC

**0.02%**  
Calculated THC Yield

**0.95%**  
Calculated CBD Yield

**1.02%**  
Total Cannabinoids

Cannabinoid	% wt	mg/ml	mg/unit
CBG	0.028	0.2632	7.98
CBD	0.95	8.93	270.75
THC	0.024	0.2256	6.84
CBC	0.017	0.1598	4.845
<b>Total Cannabinoids</b>	<b>1.02</b>	<b>9.6</b>	<b>290.4</b>
<b>Calculated THC Yield</b>	<b>0.02</b>	<b>0.23</b>	<b>6.84</b>
<b>Calculated CBD Yield</b>	<b>0.95</b>	<b>8.93</b>	<b>270.75</b>

Calculated Maximum THC Yield = THC + 0.877 \* THCA  
Calculated Maximum CBD Yield = CBD + 0.877 \* CBDA

### Marin Analytics, LLC

250 Bel Marin Blvd D-4  
Novato, CA 94949

415-936-6477 / Support@MarinAnalytics.com

**Sara Biancalana**  
Chief Scientist

This sample has been tested by Marin Analytics, LLC using valid testing methodologies and a quality system. Values reported relate only to the sample tested. Marin Analytics, LLC makes no claims as to the efficacy, safety or other risks associated with any detected or non-detected levels of any compounds reported herein. This Certificate shall not be reproduced except in full, without the written approval of Marin Analytics, LLC.