



**HHemp Co.**

Medford, OR 975-4  
Drle@hhemp.co

**Sample 224-021221-005**

**Special Sauce Pre-roll**

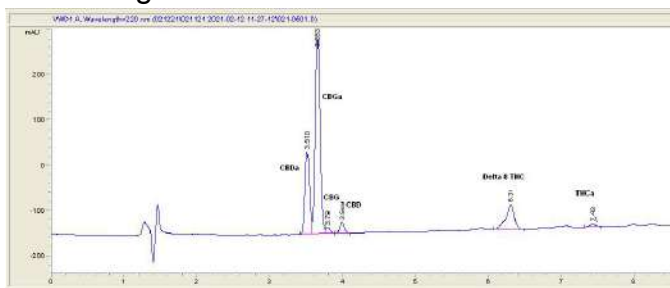
Sample Submitted: 02-12-2021; Report Date: 02-12-2021

nullSample Unit Size: 0.91 g

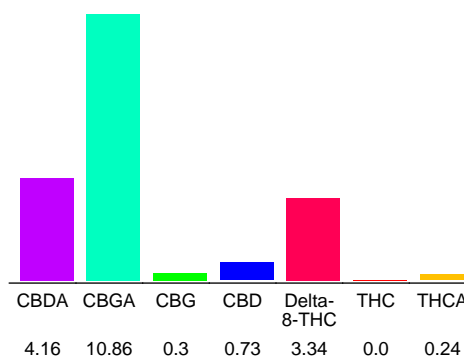
## Special Sauce Pre-roll

Plant Material

### Chromatogram



### Cannabinoid Profile



### Cannabinoid Profile by HPLC

**0.21%**

Calculated THC Yield

**4.38%**

Calculated CBD Yield

**19.63%**

Total Cannabinoids

| Cannabinoid                 | % wt         | mg/unit      |
|-----------------------------|--------------|--------------|
| CBDA                        | 4.16         | 37.86        |
| CBGA                        | 10.86        | 98.83        |
| CBG                         | 0.3          | 2.73         |
| CBD                         | 0.73         | 6.643        |
| Delta-8-THC                 | 3.34         | 30.39        |
| THC                         | 0.0          | 0.0          |
| THCA                        | 0.24         | 2.184        |
| <b>Total Cannabinoids</b>   | <b>19.63</b> | <b>178.6</b> |
| <b>Calculated THC Yield</b> | <b>0.21</b>  | <b>1.92</b>  |
| <b>Calculated CBD Yield</b> | <b>4.38</b>  | <b>39.84</b> |

Calculated Maximum THC Yield = THC + 0.877 \* THCA

Calculated Maximum CBD Yield = CBD + 0.877 \* CBDA

**Marin Analytics, LLC**

250 Bel Marin Keys Blvd, Suite D4  
Novato, CA 94949

415-936-6477 / Support@MarinAnalytics.com

**Sara Biancalana**  
Chief Scientist

This sample has been tested by Marin Analytics, LLC using valid testing methodologies and a quality system. Values reported relate only to the sample tested. Marin Analytics, LLC makes no claims as to the efficacy, safety or other risks associated with any detected or non-detected levels of any compounds reported herein. This Certificate shall not be reproduced except in full, without the written approval of Marin Analytics, LLC.